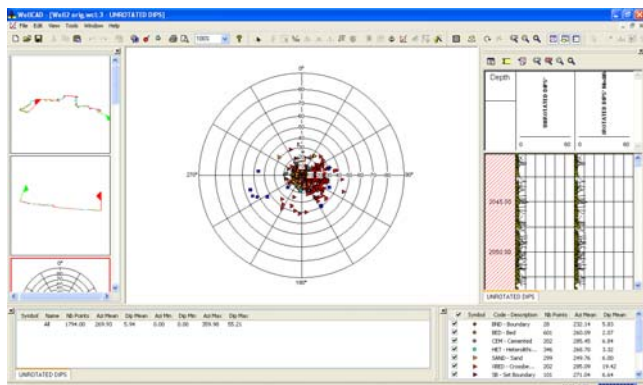


WellCAD 4.4 Release

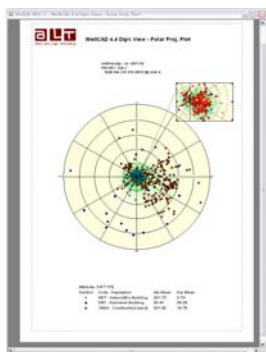
Major Features

Dips Workspace



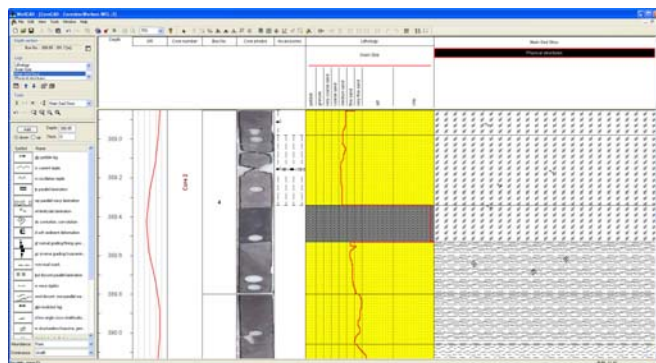
The Dips Workspace allows display, interpretation and printing of dip data independent from a Polar & Rose Logs.

- Support of Polar plots with cluster statistics and rotation options.
- Possibility to create rose diagrams and distribution histograms.
- Vector plots with support of interactive formation boundary picking.
- Woodcock diagrams to classify dips.
- Dedicated print layout preview allows adding titles, legends and annotations.
- Support of layout templates for easy creation of diagrams.
- Toolbars allow on-the-fly selection of investigate depth range and highlight interval. The user can easily choose the attributes displayed in the different diagrams and previewed in the Logs Bar.
- Easy direct export of diagrams into graphic files such as JPEG, TIF, Gif in selectable resolution.



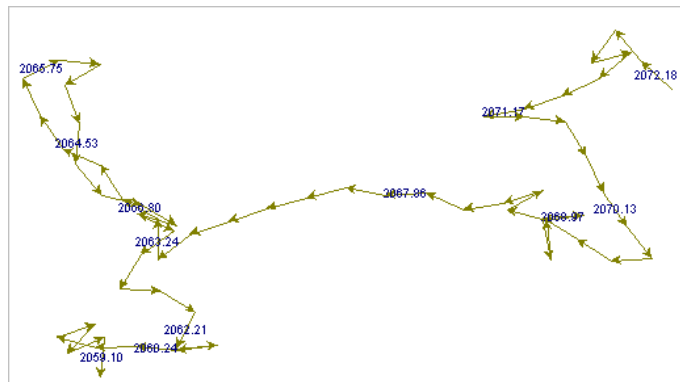
CoreCAD Data Entry Enhancements

The CoreCAD module allows now multiple logs to be edited in each workspace. This reveals the unique opportunity to describe cores "vertical" as well as "lateral".



- Sorting of pattern / symbol libraries alphabetically or by the most used ones.
- Character short cuts for fast pattern / symbol selection.
- Auto complete feature for strings in text boxes.

Vector Plots



Vector plots provide a graphical representation of cumulatively added unit vectors of orientation data (azimuth or dip). Adding the vectors from top to base (or vice versa) even small changes of structural azimuth or dip over the investigated area can be visualized and detected.

- Vector plots are available in Polar & Rose Logs as well as in the new Dips Workspace.
- Changes in vector direction can be traced by interactively adding markers to the diagram. These markers are directly converted into Marker Log data (feature of the Dips Workspace).

WellCAD 64 bit version

The new release will be available as 32 bit and 64 bit version. The installation process will provide an option to choose the desired version.

- The 64Bit version can only be used with the latest HASP USB dongles. These are the ones we distributed already for the last 4 years. They are a little shorter and more robust compared to the USB dongles we distributed before. Parallel port dongles are not supported by the 64Bit version.

ALT – Advanced Logic Technology sa

Luxembourg +352 23 649 289
Kuala Lumpur +60 3 2615 7261

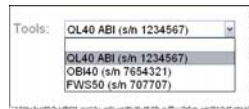
Support Email: support@alt.lu

Web: www.alt.lu



New HeadCAD Objects

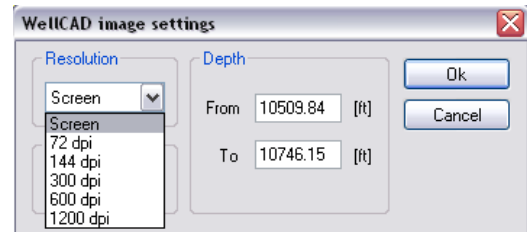
Headers can now be equipped with calendar tools, drop down lists and check boxes to make the use of borehole document header even more professional. In addition HeadCAD – the header design editor – offers new selection, border / background and alignment options.



- A double click on the objects opens the properties window now.
- Import of jpeg, tif, gif, png and bmp file supported.

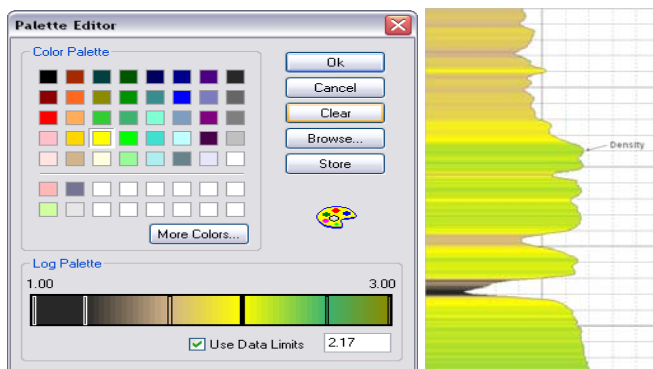
Graphic File Export

It is easy now to export a Borehole Document into a standard graphic format. From the File menu select Export > Single File and choose your desired file format. Select from JPEG, GIF, TIF, PNG, EMF, BMP and CGM formats.



Thereby the resolution of the exported graphic is user defined, ranging from Screen resolution up to 1200 dpi.

Improved Colour Palette Editor

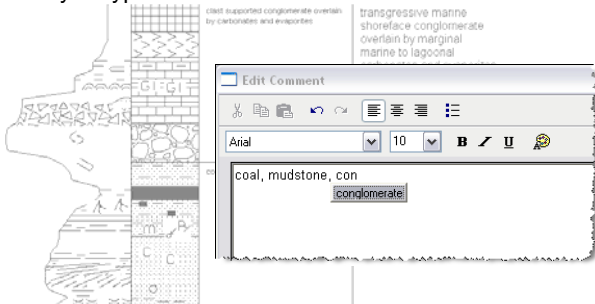


Colour Palettes used in Image Logs and for colour gradient shading in Well, Mud and Interval Logs can now be designed using a larger selection of colours.

In addition, up to 64 colours can be defined and tied to discrete values from the log's scale.

Text Auto Completion

Shorten the time of typing text into comment boxes. Simply enable the Auto Complete option in Tools > Options and have WellCAD automatically look-up your strings in a dictionary file after you typed the third character.



New Operational Symbols

Fluid Loss / Gain, Drilling and Gas Parameters and Custom operational symbols have been added to the Wellsite module.



More improvements...

- Clear Content option available for each log.
- Grid line styles are available for the Structure Log.
- Handling of multiple reference data sets in the Depth Matcher tool.
- The Litho Bar has a new appearance and allows sorting and keyboard short cuts to access pattern.
- New interface and support of overlapping intervals for the Statistics Bar.
- Defaults for grid lines can be set under Tools > Options now.
- Improved Alias Table support.
- New Round, LogBase, Max2, Min2, Power and Tanh functions in formula parser.
- Extended conversion options for CoreDesc Log.
- The Automation Module supports now Print Settings, Group / Title Settings, Base Settings and Log History
- New process for RGB Logs to extract Red, Green and Blue colour components.
- Auto zonation process involving multiple input logs.