

How to upgrade your license to 5.2

Revision 27.06.2017

DONGLE USERS

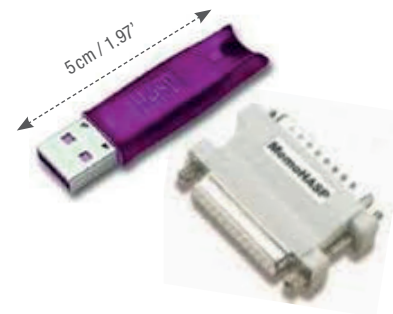
If you are under maintenance, the upgrade to the new version is free of charge. Otherwise, please contact our sales service at sales@alt.lu to get a quotation.

You own an old generation dongle (a long one or a parallel one)

Upgrading to the 32-bit version of WellCAD :

Even if you can continue using your old dongle, we recommend exchanging it as it will no longer be supported in the future due to advances in technology. Please contact our sales service at sales@alt.lu for information about the replacement procedure.

If you want to continue using it, as soon as the upgrade fee has been paid, we will send you an email with the installation procedure and the necessary activation code. Please contact our team at sales@alt.lu for more details.



Upgrading to the 64-bit version of WellCAD :

Your old dongle doesn't allow use of the 64-bit version of WellCAD. In this case your dongle has to be exchanged for a new dongle (a short one). Please contact our sales service at sales@alt.lu.

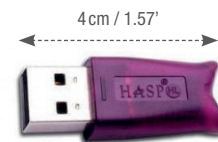
You own a new generation dongle (a short one)

You can directly upgrade to the 32-bit or the 64-bit version of WellCAD without exchanging your dongle. For this, we need to get some information about your dongle.

Start the **WellCAD RUS** application.

Select the **Collect Key Status Information** tab and click on **Collect information** button. Save the C2V file (for example, SerialNumber.C2V) and send it by email to support@alt.lu

We will then send you an email with the installation procedure in order to upgrade your dongle to the version 5.2.



You upgrade from WellCAD 4.4 (or a more recent version)

Start the WellCAD RUS application by clicking on Start ► All Programs ► WellCAD ► WellCAD RUS.

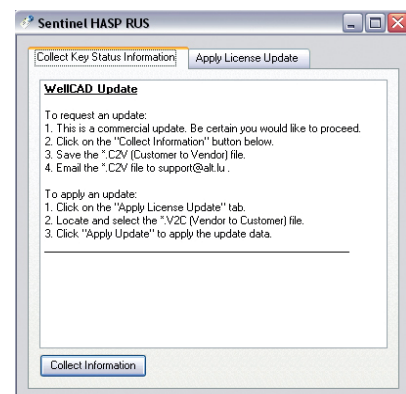
You upgrade from WellCAD 4.3 (or an older version)

Please download the WCADRUS application from our web site:

► <http://www.alt.lu/downloads/WCADRUS.zip>

Unzip the content of this zip file in a temporary directory on the computer into which the dongle is plugged (the zip file contains the files ReadMe.txt, Install.bat, Uninstall.bat, haspdinst.exe, WCADRUS.exe).

Double-click on Install.bat to install the last HASP dongle driver (It is possible that the dongle LED flashes after the dongle driver has been installed. Do NOT disconnect the key while it is flashing. This may take a few minutes).



How to upgrade your license to 5.2

Revision 27.06.2017

You own a network dongle

Upgrading to the 32-bit version of WellCAD :

Even if you can continue using your old dongle, we recommend exchanging it as it will no longer be supported in the future due to advances in technology. Please contact our sales service at sales@alt.lu for information about the replacement procedure.

If you want to continue using it, as soon as the upgrade fee has been paid, we will send you an email with the installation procedure and the necessary activation code. Please contact our team at sales@alt.lu for more details.



Upgrading to the 64-bit version of WellCAD from WellCAD 4.3 (or an older version)

Your old dongle doesn't allow use of the 64-bit version of WellCAD. In this case your dongle has to be exchanged for a new dongle. Please contact our sales service at sales@alt.lu.

Upgrading to the 64-bit version of WellCAD from WellCAD 4.4 (or a more recent version)

If your dongle is a long dongle (or a parallel one), your old dongle doesn't allow use of the 64-bit version of WellCAD. In this case your dongle has to be exchanged for a new dongle (a short one). Please contact our sales service at sales@alt.lu.

If your dongle is a short dongle, please open the following link in a Web Browser http://localhost:1947/_int_/devices.html. On the Vendor column, if you see the code 47638, you own an old generation dongle and you has to exchange it. Please contact our sales service at sales@alt.lu. Otherwise, you can use your dongle without exchanging it.

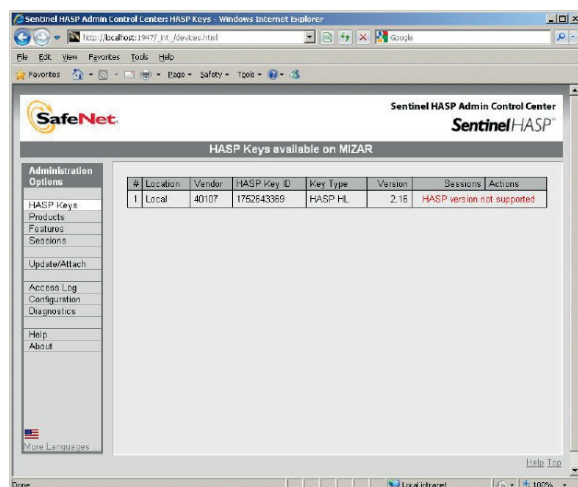
#	Location	Vendor	Key ID	Key Type	Configuration
1	Local	47638	1976657892	HASP HL Net 50 	-
2	Local	40107	34852138	HASP HL Net 50 	-

Note

It is possible that you will have some difficulty in getting the C2V file. If you receive the following error message while collecting key status information :



and, if you see HASP version not supported :when you open the following link in a Web Browser http://localhost:1947/_int_/devices.html



then start the WCADRUS application, select the “**Apply License Update**” tab. Click on the “...” button and select the attached “firmware_update_325.v2c” file (Or download it from http://www.alt.lu/downloads/firmware_update_325.v2c).

Then click on the **Apply Update** button. (Note: Before clicking Apply Update, ensure that only one HASP HL key is connected to the computer. Do NOT disconnect the key during the update process. The update process may take a few minutes. The dongle LED flashes while the upgrade process takes place).

If you get an other error message such as “**Could not determine the version of the License Manager**” please be sure that the latest driver utility for your dongle has been installed.

You can download the latest HASP device driver utility from our web site:

► <http://www.alt.lu/downloads.htm>

If you still have an issue, please contact our support team at support@alt.lu

FLEXLM USERS

Please contact our team at support@alt.lu to get a new license file.